



Tuckers Orchid Nursery

Presents...

Orchids for Everyone



Editor: Cathy Hine

1370 East Coast Road. Redvale, Auckland, NZ.

Ph (09) 473 8629

Website: www.tuckersorchidnursery.co.nz

Issue 26: March 2013



FROM ROSS THE BOSS

Welcome back –

This has been one of the hottest and driest summers I can remember for a few years. Your orchids will be smiling if you have been able to keep watering and feeding regularly. I was talking to a couple of commercial cymbidium growers, and they have noticed an increase in the number of flower spikes this year, because of last year's poor light levels – too much cloud and raincover in summer, so they are predicting a tri-fecta pay out this year. Some are spiking from the bulbs that didn't produce last summer. They have produced this year's normal spiking, and an increase because of the high light levels and good temperatures – not too hot. If you don't get a good flowering this year is not the weather conditions it's your (the growers) fault. Not enough water and food. So get to it. It's still not too late to produce spikes. Other genera have been similarly affected. Phalaenopsis have grown huge leaves because of the heat. Paphs have lots of new growths showing. Odontoglossums new larger bulbs and plenty of spikes showing, and cattleyas have lots of new growths and good flowering of the mature growths. I hope it continues along these lines throughout the year – and it truly will be a good Orchid Year.

This month we feature Cattleyas as we have many new releases onto the web and lots of new cattleyas for the Orchid Club members. Susan will be informing you further later on about the steps to become one of our 'Special Customers' with some special plants available to you throughout the year. Many of these will be in limited numbers and larger sizes.

Some of our new Cattleya parents



Pot Rubescence 'Creation'



Blc Love Sound 'Dogashima'



Slc Seagulls Apricot

(Plants displayed in this section are for informational purposes only; we may not always have these plants in stock)

CATS COMMENT:

I think I have changed my mind. It doesn't happen very often so listen up. I was somewhat privately skeptical when Ross said they were changing the watering system from twice a week to twice a day. I thought that the plants would rot from the excess watering, but I have to say I am impressed. The extra spikes and large growth Ross mentions in his section are a result of the extra watering and feeding, more than just the extra light levels. The odonts and cattleyas are looking great – this is what got my attention as they are my passion. So I have changed my watering at home too. When I can I try to water every day – a lighter water first and then a deeper water half an hour later. I think that the odonts will benefit from this and the cymbids too. I also have noticed the cymbids are spiking earlier this year. As the weather cools I will revert back to normal watering for winter but at the moment all seems well.

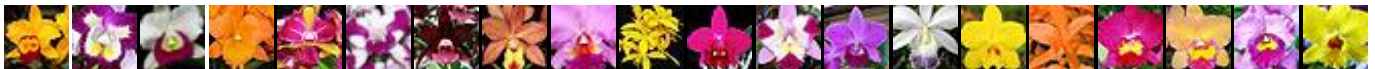
SPECIALS THIS MONTH:

These specials are only available until the next newsletter issue.

6 pack of Cattleyas size B	\$50 incl GST
6 pack of Cattleyas size C	\$80 incl GST
10 pack of Cattleyas size B	\$90 incl GST

These specials are now available for ordering through our website. Look for them in the Online Orchid Club category. Please let us know if you do not see this category option.

Included are free cultural notes and a special free gift (Delivery charges apply). To place an order you can email us at orchids@clear.net.nz or visit our website www.tuckersorchidnursery.co.nz to view our range. We are happy to send these orchids anywhere in NZ only.



WEBSITE WATSUP:

In the December newsletter I touched on how we were working towards putting the newsletter specials on our website. This has now been accomplished and some of our members have managed to work their way through some glitches and ordered our specials. For those that may have tried and gave up, here's what you need to do;

1. The specials are only available to view by Online Orchid Club members. Create an account on our website.
2. Email us once the account has been created and we will change the status over from Retail to Online Orchid Club. We will email you back once this has been completed.
3. Clear your browsing history.
 - 3.1 For Internet Explorer, open the browser window, click on the Tools menu and then select Internet Options. On the first screen, the General Tab, you will see Browsing History. Delete your browsing history.
 - 3.2 For Mozilla Firefox, open the browser window, click on the Tools menu and select Options. On the Privacy tab click on Clear your recent history. Ensure that you then select 'Everything' at the next screen.
 - 3.3 For Google Chrome, click on the button at the top right of the screen showing three horizontal bars. Select Tools and then Clear browsing data. Ensure that you then select 'the beginning of time' at the next screen.
4. Log in to our website using your email address and password. You should now see the additional Online Orchid Club plant category on the left hand side.

If you are still experiencing problems, please email me and I will endeavour to sort them out for you. Meanwhile, we will keep last month's specials up for another month to allow for those that wanted them but were having problems getting them.

Note 1: If you are wishing to order specific varieties to be included in one of the multipacks, either type the details into the Comments box at Step 5 of the checkout process or email us straight away. Otherwise we will assume that you wish us to make a selection for you.

Note 2: For the first time since we created this website we have loaded in some new varieties of orchids not previously available. As promised, these will be made available to our Online Orchid Club members first before being made generally available. You will find them in the Online Orchid Club category and they will go to general release once the next newsletter issue is released. Remember, the early bird catches the worm (we pick the best plants first to fill orders).

Susan Tucker



FEATURE OF THE MONTH – CATTLEYAS

These orchids were named after William Cattley (1824) who was the first person to grow them successfully in Britain. (More probably his gardener!) They had leathery leaves and were wrapped around the other more delicate orchid plants in transit to protect them.

Species of Cattleya are distributed widely throughout Central America and several South American countries. The larger flowered Cattleyas and Laelias mainly come from the hot damp Amazonian rain forests but many of the smaller flowered species come from the drier, cooler mountainous areas of Central America and the West Indies. Most are beautifully scented.

The term Cattleya is used to represent a family of orchids that include Laelias, Sophronitis, Broughtonia, Brassavola, and Epidendrums and of course Cattleyas with which they will all hybridize freely. Hybridizers have had a field-day making various crosses in every colour imaginable, and the subsequent names given to the plants were designed to give the average orchid grower a real headache!

The most frequently seen names are:

Brassolaeliocattleya (Blc) Brassavola x Laelia x Cattleya

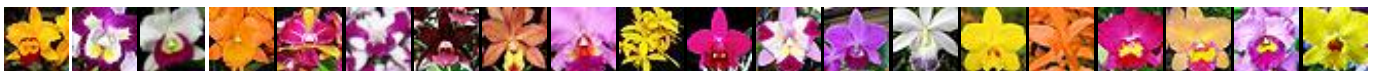
Laeliocattleya (Lc) Laelia x Cattleya

Sophrolaeliocattleya (Slc) Sophronitis x Laelia x Cattleya

Potinara (Pot) Brassavola x Sophronitis x Cattleya x Laelia

Epicattleya (Epc) Epidendrum x Cattleya.

To complicate matters some of the species have been renamed but we will collectively refer to them as Cattleyas.



CULTURE OF CATTLEYAS:

Cattleyas are relatively easy to grow.

Light: They prefer bright light, either in a glasshouse with approx 30% shade cloth above them, or they can be grown in the house at a North or West facing window, but avoid direct sunlight as this can scorch them, and the leaves will blister if the sun is too strong. Aim for strong light green leaves. During the summer they would prefer to be outside if at all possible.

Temperature: They will be happy with a min night temp of 12-13 deg C. They can cope with temps up to 35 deg C without too much stress. Like all orchids they do best with plenty of air movement. A small fan can be used if growing indoors or in a glasshouse. This helps to prevent many fungal diseases.

Humidity and Watering: Watering: Water freely during the summer months, but make sure that the pot has dried out between waterings. Lift it to check if you are not sure. If the pot is still heavy, wait a day or two and recheck. Most Cattleyas like a rest after flowering—that means keep the watering to a minimum and no feeding for a few weeks. When the plant makes new root growth, start gradually increasing the frequency of feeding and watering.

Feeding: Feed Flowering Orchid Tucker fertilizer weekly, or if you feed with every watering then one quarter strength is recommended. Make sure to flush with plain water between feedings.

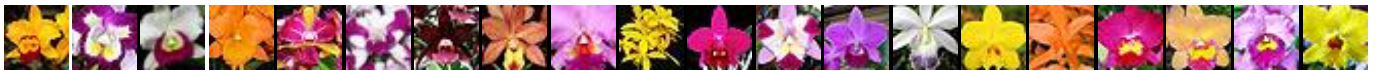
Repotting: Use an open free draining mix. Fairly coarse bark is desirable as they do not like to have wet feet! Some Cattleyas can be adapted to grow on rafts of punga or feijoa wood. If using plastic pots drilling extra holes around the side of the pot will help to increase air movement around the roots.

A FEW GEMS FROM THE LATE JOHN THE PRODUCTION MANAGER (We will reprint these where applicable as the information is priceless)

Tip 1: When you start to see the signs of a new stem of flowers coming through, the first sign is usually the sheath emerging from the top of the cane. Carefully cut the top 3-5mm off the sheath once you see the buds developing within the sheath. This will prevent the buds from sweating and rotting before they can break free of the sheath.

Tip 2: I can't emphasise enough how important good light is for flowering Cattleyas. If you have the right light levels your flower stem will raise strongly clear from the foliage and the individual flowers will present themselves 360° around the stem rather than being clumped on one side.

Tip 3: Try not to be tempted to divide your Cattleya too quickly. Once you have them in a larger sized plant the latest breeding of compact Cattleyas will flower off each new growth. New growth can happen several times a year so a larger plant can be almost constantly flowering providing a lot of rewards and enjoyment.



SPOTLIGHT ON SPECIES: *L purpurata*

These are an cool to intermediate growing epiphyte found in Brazil. They are large plants with fairly tall pseudobulbs topped by a large single leathery leaf. They grow high in the canopy of forested hillsides, flowering late summer to autumn with large showy flowers in a range of colours. We are focusing on the blue or coerulea varieties in this edition. *L purpurata* is now more correctly known as *C purpurata*. At Tuckers Orchids we have just had awarded, a plant of C C.G. Roebling 'Blue Indigo', which is a cross of *C gaskelliana* x *C purpurata*. They have beautiful blue blooms with a spicy scent, and a large deep blue lip. Regrettably, we do not have any small plants for sale but we do however have similar crosses and other crosses of a similar colouration that we can offer our members.

Similar varieties include:

C Tahoe Rose var coerulea 'GC' (C walkeriana x C purpurata) B & B+ sizes available

Lc Kazuko Takamatsu 'Seto Blue' (C warneri x Lc Mini Purple) B & B= sizes available

C Mary Elizabeth Bohn 'Akiyama' AM/JOS (C Blue Boy x C bowringiana) limited numbers only

C purpurata var 'Roxo-violacea' x var werckhauseri – limited numbers only

Lc Dinard 'Blue Heaven' (C. Saint Gothard x C. Dinah) – limited numbers only



C C.G. Roebling
'Blue Indigo'



C Tahoe Rose var coerulea 'GC'



Lc Kazuko Takamatsu
'Seto Blue'



Lc Dinard 'Blue Heaven'



C purpurata var 'Roxo-violacea'



C Mary Elizabeth Bohn
'Akiyama' AM/JOS

WHERE WE ARE OUT AND ABOUT THIS MONTH:

Home & Garden Show – North Shore Event Centre

22nd - 24th March

HOW TO FIND US

Directions: Exit Northern Motorway at Oteha Valley Road. Turn east onto Oteha Valley Road, travel straight through two roundabouts. You will encounter a significant intersection with traffic lights – this is East Coast Road. Turn left or northwards onto East Coast Road. From this point we are approximately 4km on the left-hand side.



Next Month we will be focusing on: Angraecum & related genera

Angraecum dideri

Please note, the photos of plants shown in our newsletter are a mixture of breeding plants, plants we have seen in our travels and plants we have for sale. Not all of the plants that are displayed in our newsletter are available as plants for sale. Please check our website for details of what plants we have for sale. We do, however, welcome requests for plants that are not listed on our website as we may be able to supply them or something very similar.

